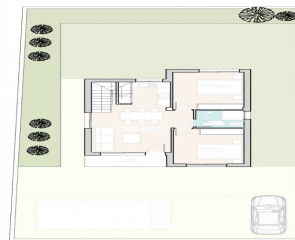
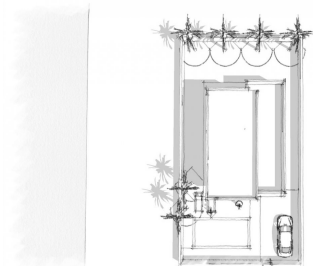
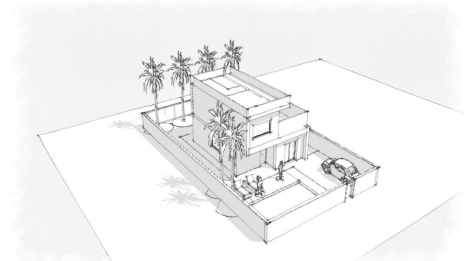
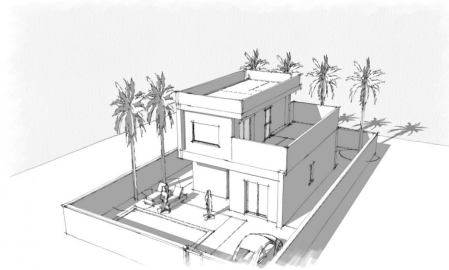


JL63642C



VILLAS DE NOUVELLE CONSTRUCTION A ROQUES00



VIVIENDA 1		PARCELA 306,00 m²
SUP. CONSTR. VVP.B.	86,88 m ²	
POBOSICION 100%	2,77 m ²	
SUP. CONSTR. VVP.1.	35,83 m ²	
SUP. CONST. TOTAL	100,48 m ²	
SUP. UTIL SOLARUM.	32,56 m ²	



3



2



102m²



306m²



N/A