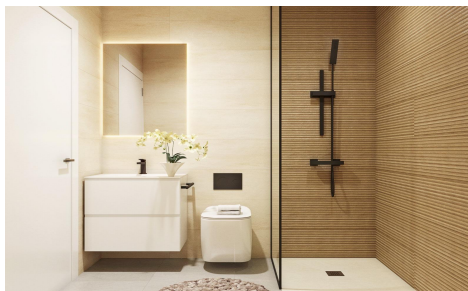
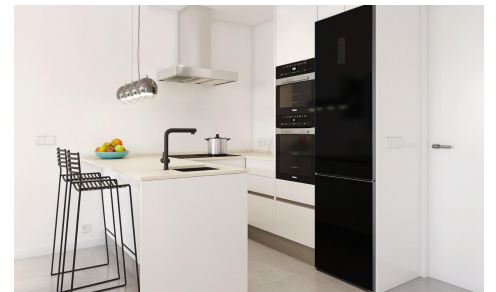
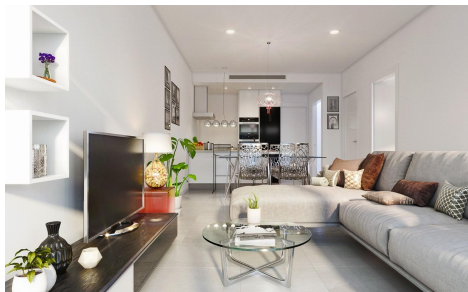
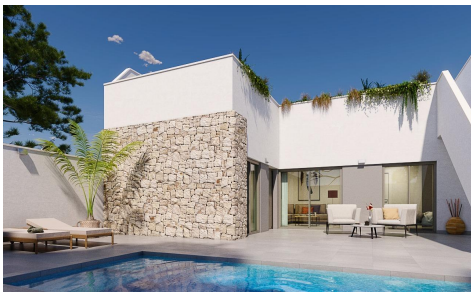


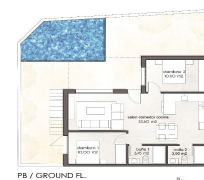
JL68363L



NEW BUILD SEMI-DETACHED VILLAS IN PILAR 385,000€



Plot n°14



P0 / GROUND FL.

VILLA Nº 14	PLOT 14 183,60 m2
SUP. CONSTR. VIV. P. 0	71,40 m2
SUP. CONSTR. PAVO. VIV. P. 0	6,84 m2
SUP. CONSTR. TOTAL	78,24 m2
SUP. TER. TOTAL VIV.	144,29 m2



P1 / FIRST FL.



2



2



71m²



152m²



N/A